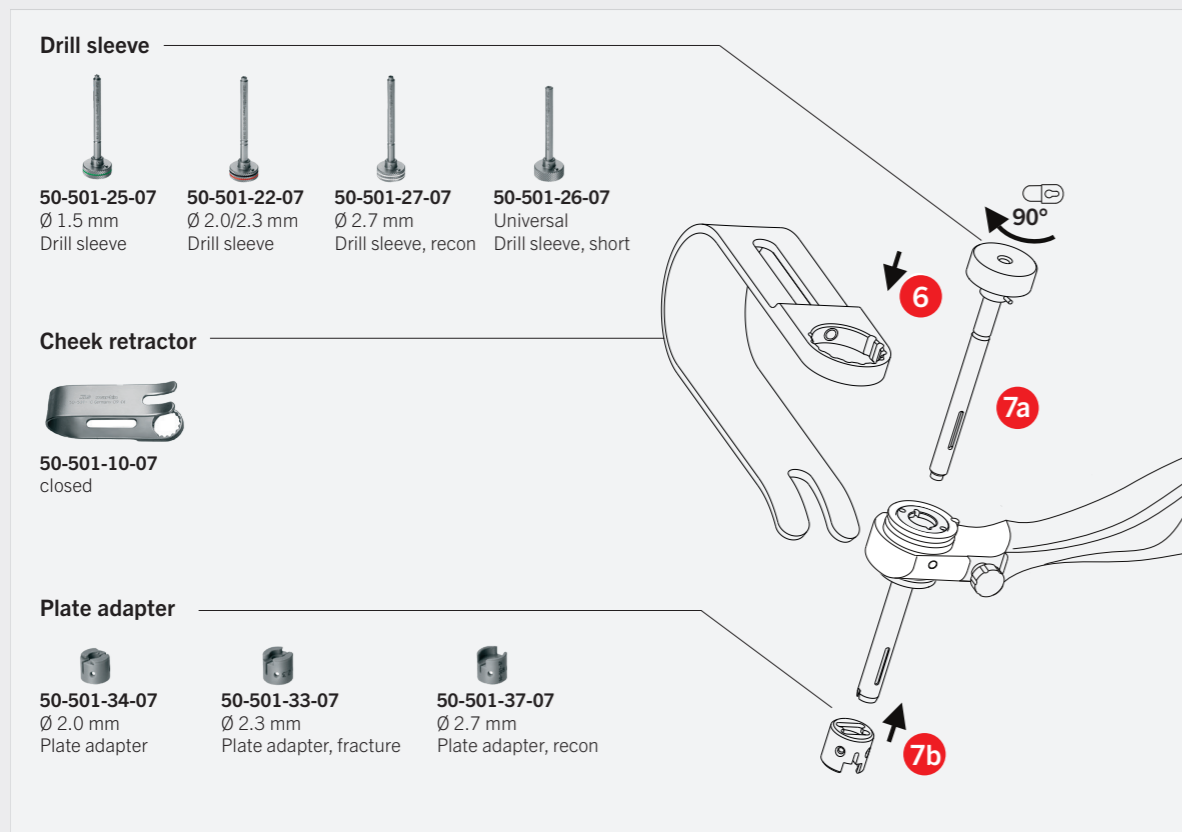
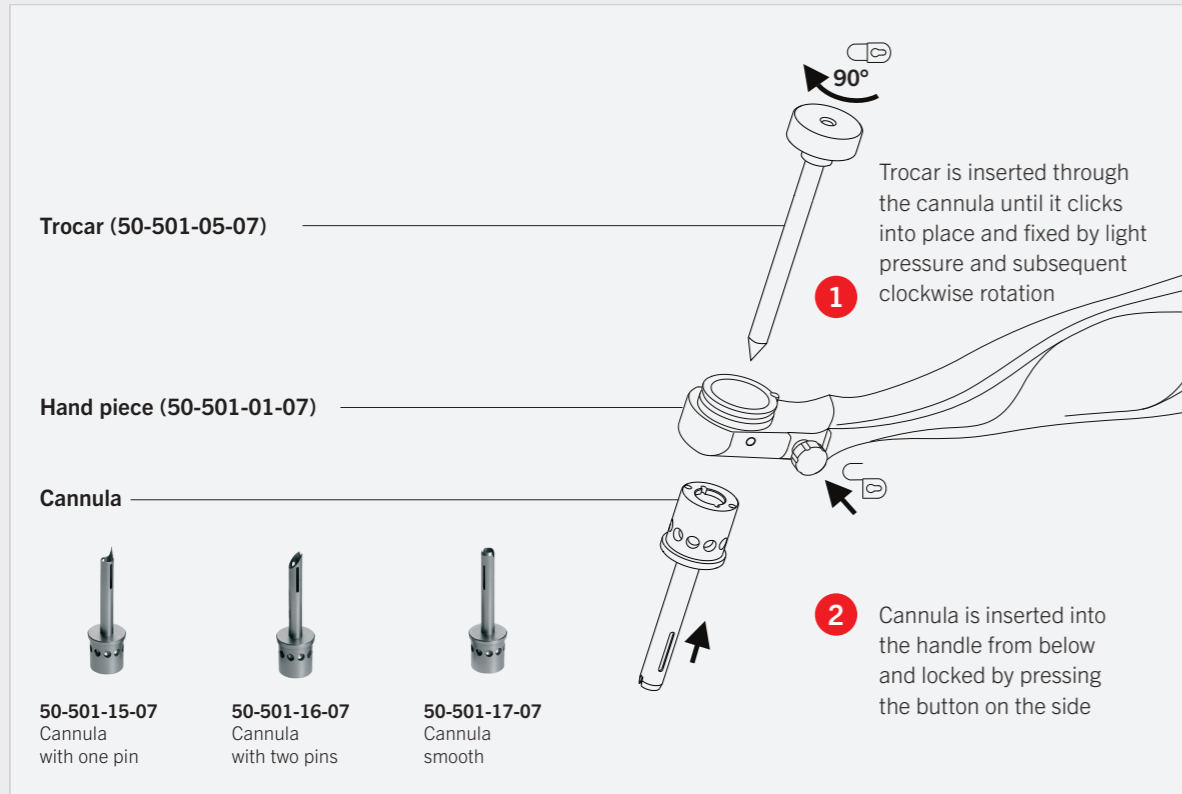


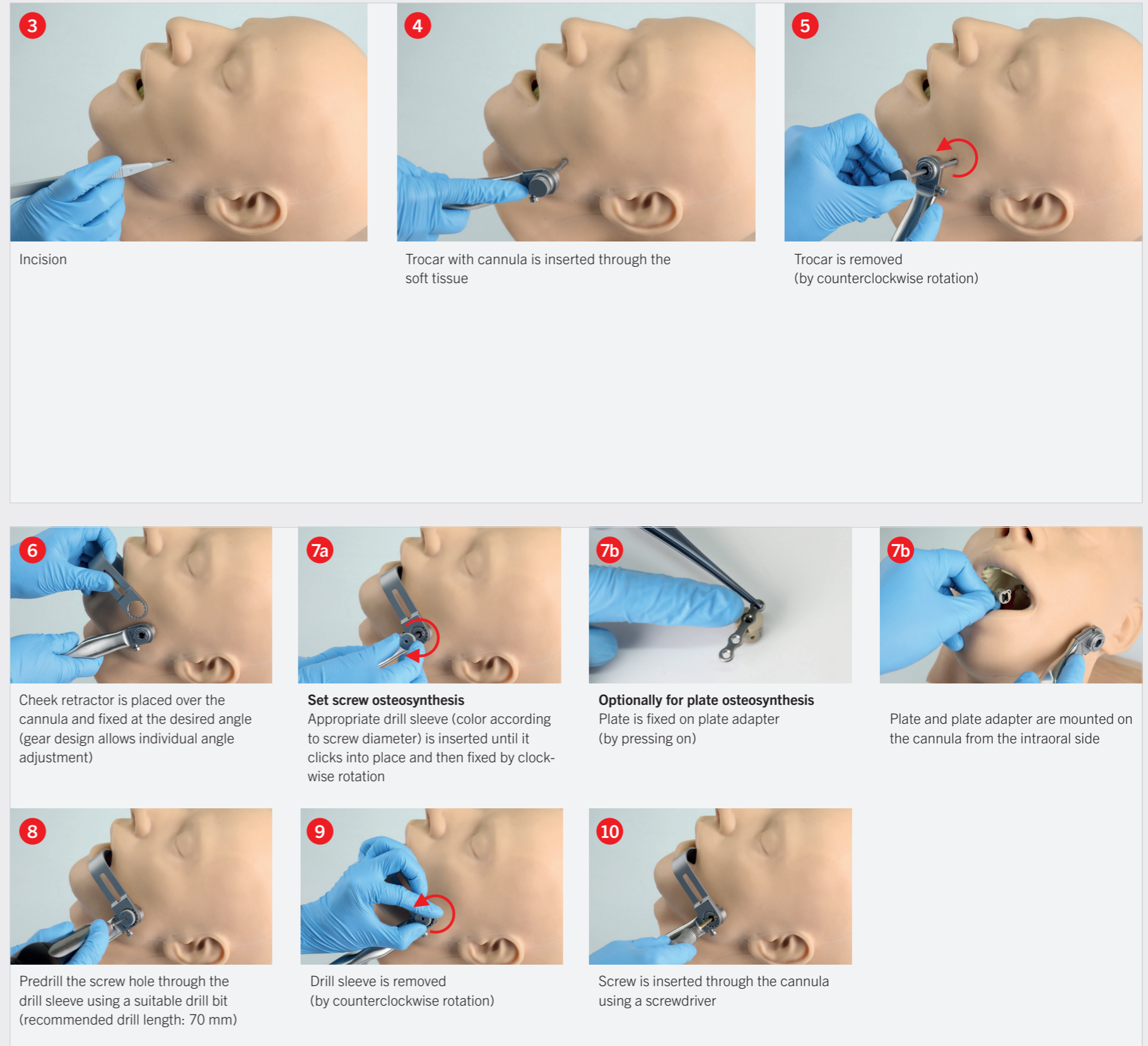
# LevelOne – Transbuccal system

## Quick Guide

### Set-up



### Application



**Note:**  
This is a quick guide to help users already familiar with the equipment which does not include all details. The information presented in this guide is intended to demonstrate KLS Martin Group products. Please refer to the instructions for use for the full list of indications, contraindications, warnings, precautions, and sterilization information. Always refer to the instructions for use before using any KLS Martin Group product. Surgeons must always rely on their own clinical judgment when deciding which products and techniques to use with their patients.